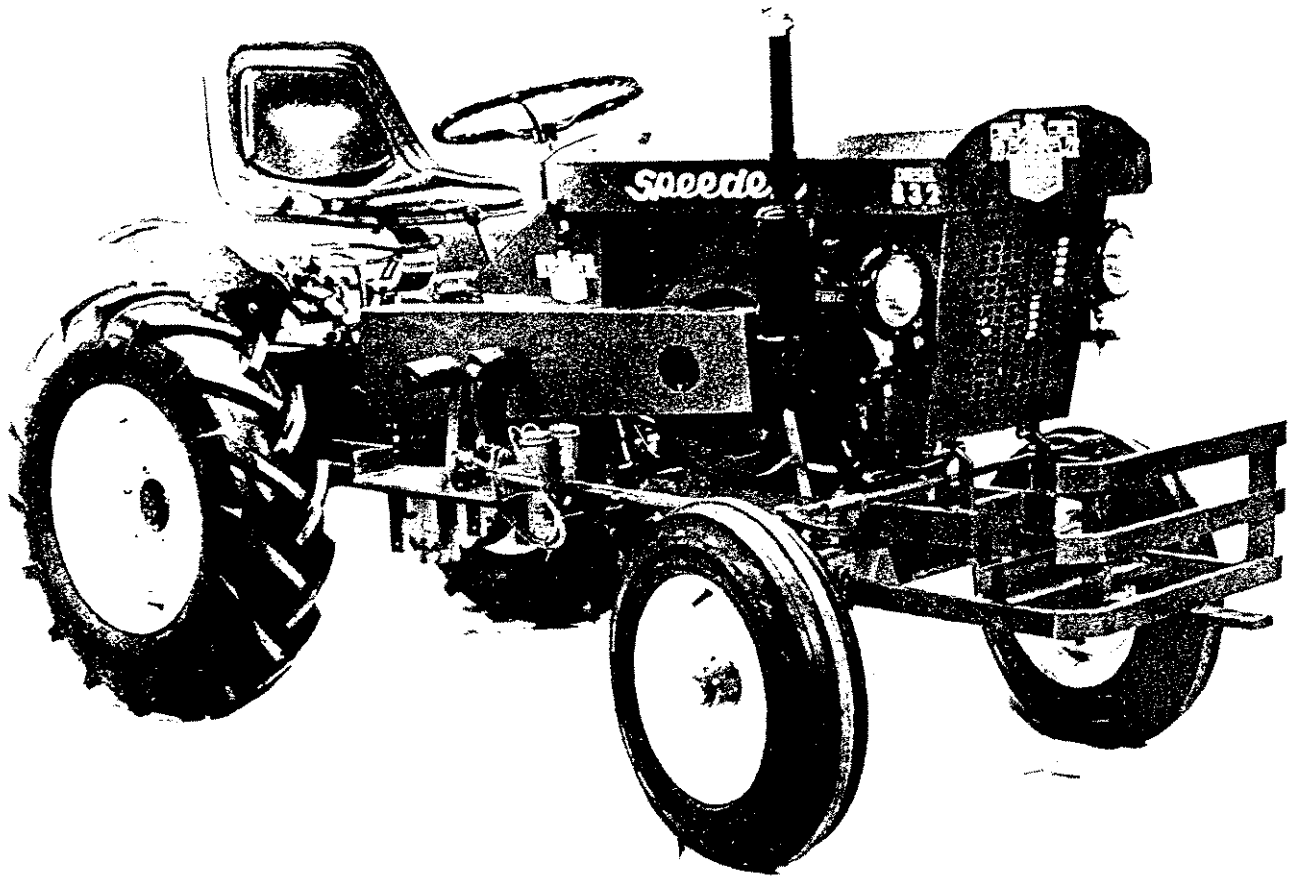


# Speedex

## Owner and Parts Manual for

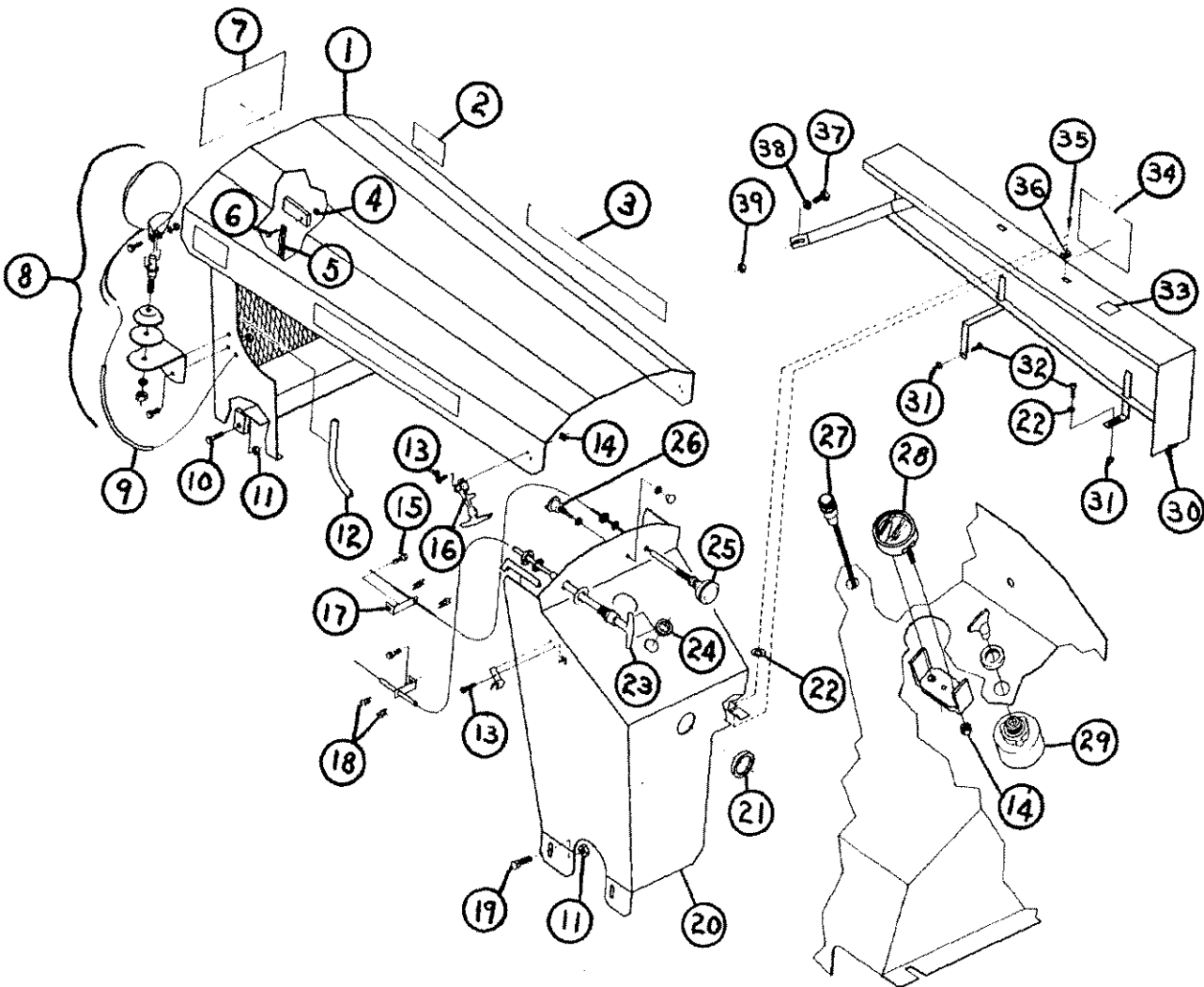
### Model 832 Tractor



Speedex Tractor Company

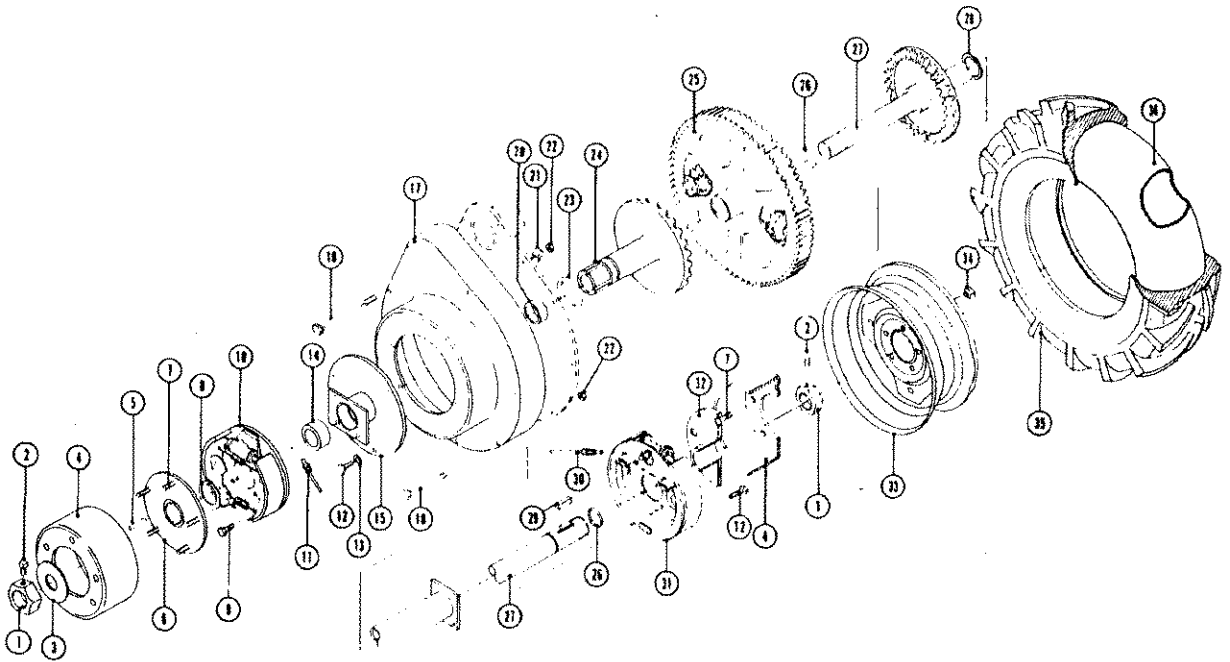
## Sheet Metal Group

Item	Description	Part No.	Qty
1	Hood	3439-7502	1
2	Model 832 Decal	42-0832	2
3	Speedex Script Decal	42-1104	2
4	1/4 - 20 Locknut	919-2600	5
5	Chain 18" Lg.	56-1018	1
6	1/4 - 20 x 3/4 Hx. Hd. Cp. Screw	847-2603	6
7	Eagle Decal	42-1109	1
8	Head Light Kit	35-7001	2
9	Wire Loom 10" Lg.	3219-0619	+
10	5/16 - 18 x 1 Hx. Hd. Cp. Screw	847-2804	2
11	5/16 - 18 Hx. Nut	919-2800	2
12	Wire Enforced Trim	3219-0601	+
13	6-32 x 1/2 Rd. Hd. Screw	811-1512	9
14	6-32 Sq Hd Nut	902-1500	9
15	#10 - 32 x 1/2 Pan Hd. Screw	811-2212	2
16	Hood Latch	37-7110	2
17	Support Arm	30-2013	2
18	X Washer	80-1027	4
19	5/16 - 18 x 1 Carriage Bolt	843-2804	2
20	Dash	3439-7503	1
21	Grommet	46-0102	1
22	3/8 Washer	80-0230	3
23	Throttle Control	36-0082	1
24	Grommet	46-0101	1
25	Compression Release Control	36-0069	1
26	Light Switch	33-5007	1
27	Generator Lite (Red)	35-0832	1
28	Ammeter	35-4015	1
29	Ignition Switch	Complete with Engine	1
30	Belt Guard	3439-7501	1
31	3/8 - 16 Nut	918-3000	2
32	3/8 - 16 x 1 1/4 Hx. Hd. Cp. Screw	847-3005	2
33	Shift Pattern Decal	42-1103	1
34	Small Eagle Decal	42-1106	1
35	#10 - 32 x 1/2 Pan Hd. Screw	811-2212	2
36	Snap on Nut	907-2200	2
37	5/16 - 18 x 1 Hx. Hd. Cp. Screw	847-2804	1
38	5/16 Lockwasher	80-0528	1
39	5/16 - 18 Nut	919-2800	1
+ In Lengths			



## Final Drive Group

Item	Description	Part No.	Qty
1	1-3/8-12 Hx. Nut	903-5400	2
2	5/16-18 x 5/8 Sq. Hd. Set Screw	849-2858	2
3	1-3/8 Thrust Washer	80-0253	1
4	Brake Drum L.H. *	3309-0707	2
5	1/4 x 1 1/2 Sq. Key	68-0424	2
6	Wheel Hub Assembly L.H.S.	3309-8002	1
7	Wheel Stud	857-3424	10
8	Snap Ring	58-0200	1
9	7/16-20 X 1 Soc. HD. CP. Screw	875-3304	8
10	Brake Assembly L.H.S.	78-0830	1
11	Brake Line Assembly L.H.S.	78-8830	1
12	1/4-20 x 3/4 Hx. Hd. Cp. Screw	847-2603	6
13	1/4 Flat Washer	80-0226	6
14	Oillite Bearing	40-2004	1
15	Brake Support Weldment	3309-7006	1
16	1/4-20 x 3 1/2 Hx. Hd. Cp. Screw	847-2614	1
17	Differential Housing Cover	2409-0705	1
18	1/4-20 x 3 1/4 Hx. Hd. Cp. Screw	847-2613	10
20	Oillite Bearing	40-1604	1
21	Clamp	35-1205	1
22	1/4-20 Hx. Nut	902-2600	11
23	0" Ring	45-2056	1
24	Drive Tube Weldment	3309-7002	1
25	Bull Gear Assembly	3309-8009	1
26	0" Ring	45-2036	2
27	Main Axle Shaft Weldment	3309-7001	1
28	Thrust Washer	80-0254	3
29	1/4 x 1 1/2 Sq. Key	68-0424	1
30	Brake Line Assembly R.H.S.	78-8831	1
31	Brake Assembly R.H.S.	78-0831	1
32	Wheel Hub Assembly R.H.S.	3309-8005	1
33	Wheel Rim 16"	41-4516	2
34	Wheel Nut	914-3500	10
35	8" X 16" Tire	41-2816	2
36	8" x 16" Inner Tube	41-1816	2
*	R.H. Brake Drum	3309-0708	

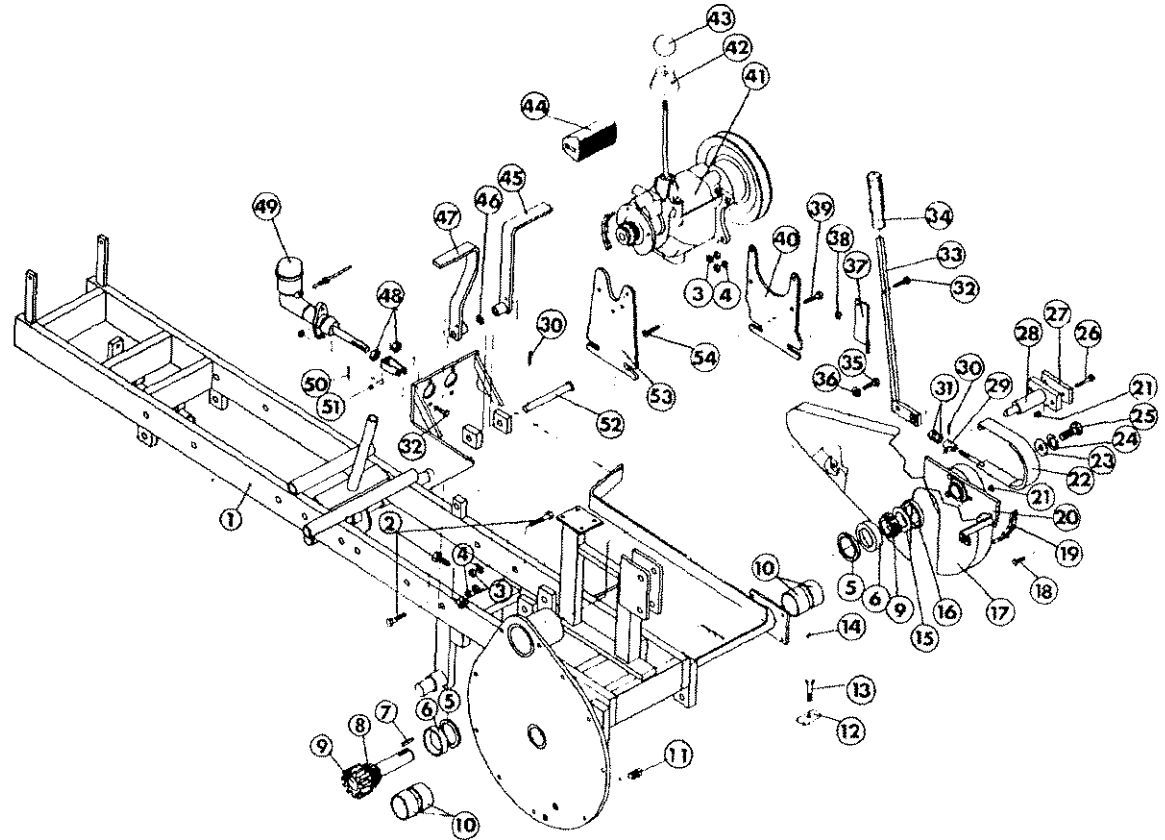


# Frame Group

Item	Description	Part No.	Qty
1	Frame Weldment	3401-7008	1
2	3/8-16 x 1 1/2 Hx. Hd. Cp. Screw	847-3006	5
3	3/8-16 Hx. Nut	902-3000	10
4	3/8 Lockwasher	80-0530	10
5	Back-Up-Ring	40-5631	2
6	Outer Bearing Race	40-7010	2
7	1/4 x 1 1/2 Sq. Key	68-0424	1
8	Pinion Weldment	3311-7002	1
9	Tapered Roller Bearing	40-7048	2
10	Bronze Bushing	40-1604	4
11	Oil Plug	866-7100	2
12	Battery Hold Down	35-2002	2
13	5/16-18 x 2 Hd. Cp. Screw	847-2808	2
14	Grease Fitting	862-0501	2
15	Flinger	40-5634	1
16	Closure	40-5633	1
17	Chain Guard	2439-7003	1
18	5/16-18 x 3/4 Hx. Hd. Co. Screw	847-2803	3
19	Chain	56-4046	1
20	Sprocket Weldment	2411-7004	1
21	5/16-18 Nut	919-2800	3
22	Brake Band Assembly	1710-8003	1
23	5/8 Flat Washer	80-0238	1
24	5/8 Lockwasher	80-0538	1
25	5/8-18 x 1 Hx. Hd. Cp. Screw	847-3904	1
26	5/16-18 x 2 Hx. HJ. Cp. Screw	847-2808	2
27	Keeper	2410-2007	1
28	Brake Anchor Weldment	2410-7004	1
29	Adjusting Knuckle	1710-7006	1
30	1/8 x 3/4 Cotter Pin	52-0206	4
31	3/8-16 Hx. Nut	902-3000	2
32	5/16-18 x 1 1/4 Hx. Hd. Cp. Screw	847-2805	5
33	Brake Lever Weldment	2410-7005	1
34	Handle Grip	44-0378	1
35	5/16-18 x 1 Hx. Hd. Cp. Screw	847-2804	1
36	5/16 Lockwasher	80-0528	1
38	5/16-18 Nut	919-2800	5
39	3/8-16 x 1 1/4 Hx. Hd. Cp. Screw	847-3005	4
40	R.H. Support Plate	2407-3501	1
41	3 Speed Transmission	2407-8001	1
42	Rubber Boot	44-5940	1
43	Shifter Knob	44-0095	1
44	Rubber Brake Pedal	46-0114	2
45	R.H. Foot Brake Pedal	3310-7001	1

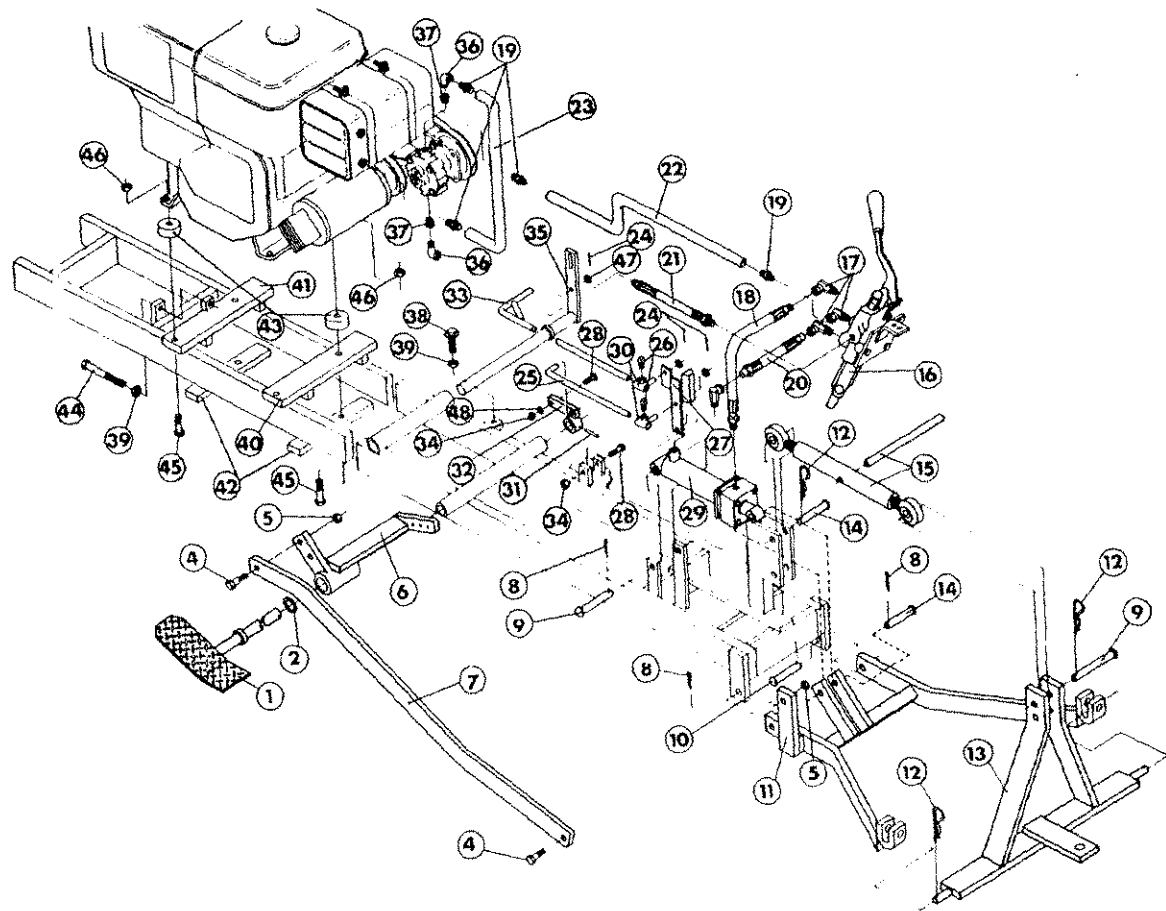
Item	Description	Part No.	Qty
46	5/8 Flat Washer	80-1039	1
47	L.H. Foot Brake Pedal	3310-7002	1
48	5/16-24 Nut	919-2900	4
49	Master Cylinder Assembly	78-7108	2
50	3/32 x 3/4 Cotter Pin	52-0106	2
51	5/16 x 7/8 Clevis Pin	51-0507	2
52	Pivot Pin	51-1017	1
53	L.H. Support Plate	2407-3004	1
54	3/8-16 x 1 1/4 Flat Slot Hd. Screw	850-3005	3

NOT SHOWN			
61	Battery Cable 50" Lg.	32-9250	1
62	Battery Cable 13" Lg.	32-9213	1
63	Plastic Chain Guard Cover	2439-3501	1
64	Plastic Chain Guard Clips	59-8215	5
66	Hand Brake Drum	1710-3501	1

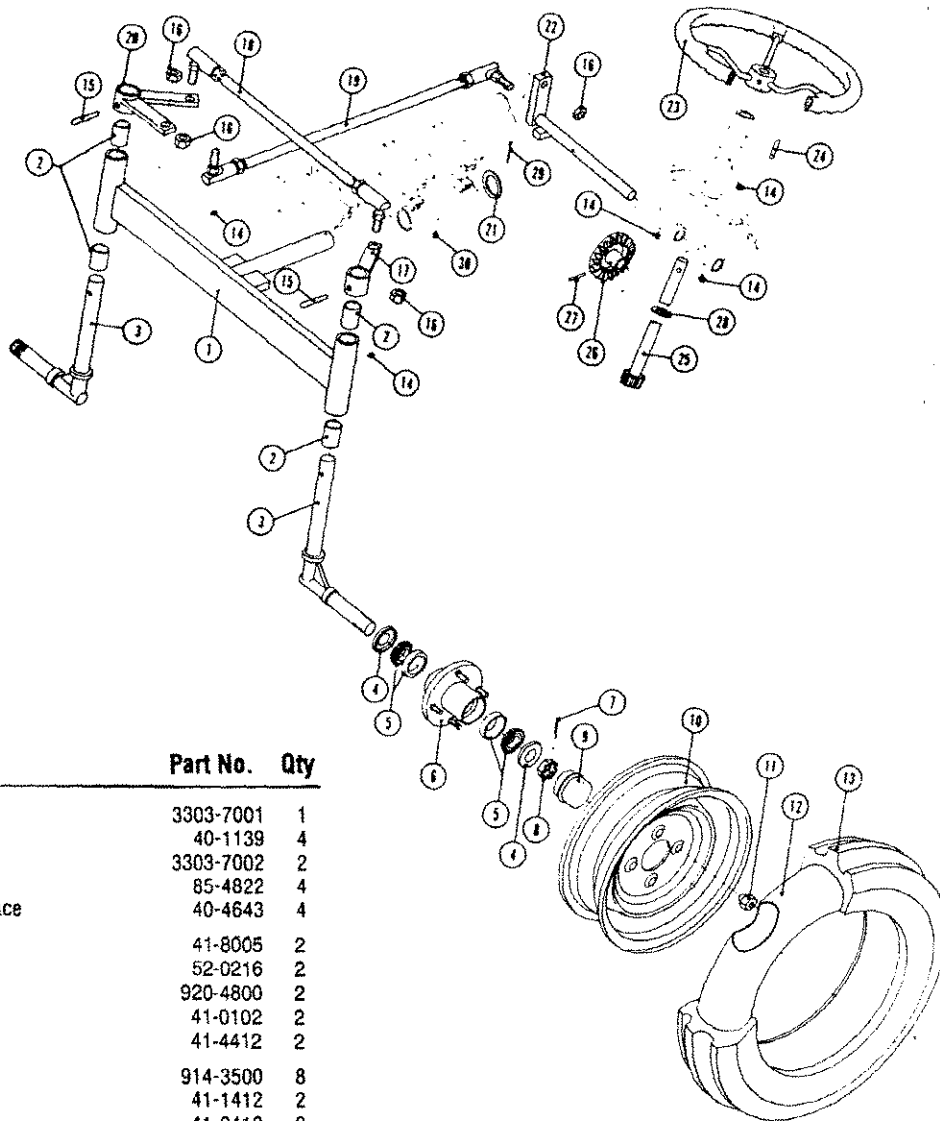


## Clutch/Brake and Lift Group

Item	Description	Part No.	Qty
1	Clutch Pedal Weldment	3306-7001	1
2	Spacer	80-1043	
3	Bell Crank Weldment	3304-7004	1
4	1/2-13 x 1 1/4 Hx.Hd.Cp.Screw	847-3405	2
5	1/2-13 Nut	1902-3400	2
6	Bell Crank Weldment	3304-7004	1
7	Lift Bar	3304-2505	1
8	1/8 x 1 Cotter Pin	52-0208	3
9	5/8 x 3 Clevis Pin	51-1024	2
10	5/8 x 1-5/8 Clevis Pin	51-1014	1
11	3 Pt Hitch Weldment	3304-7011	1
12	Hair Pin	54-0009	4
13	Tow Hitch Weldment	3304-7002	1
14	5/8 x 2 Clevis Pin	51-1016	2
15	Third Arm Assembly	3304-8004	1
16	Hydraulic Control Valve	78-8002	1
17	90° Swivel Fitting	74-9405	5
18	Hydraulic Hose	81-2503	1
19	Push Lock Fitting	76-0606	4
20	Hydraulic Hose	81-2503	1
21	Hydraulic Hose	81-5403	1
22	Hydraulic Hose	77-3654	1
23	Hydraulic Hose	77-3614	1
24	1/8 x 3/4 Cotter Pin	52-0206	4
25	Brake Rod	2410-1502	1
26	3/8-16 x 3/4 Sq. Hd. Set Screw	849-3003	2
27	Brake Arm Assembly	3410-8001	1
28	3/8-16 x 1 1/4 Hx. Hd. Cp. Screw	847-3005	2
29	Hydraulic Cylinder	79-1840	1
30	Trunnion Weldment	1906-8001	2
31	1/4 x 1 1/4 Spirol Pin		
36	Elbow 1/4 NPT	866-9071	2
37	Reducer 3/8 -2 1/4	866-7200	2
38	1/2 - 13 x 3 1/2 HHCS	847-3414	1
39	1/2 - 13 Sq. Nut	907-3400	1
40	Rear Motor Mount	3401-2004	1
41	Front Motor Mount	3401-2004	1
42	Motor Mount Keeper	3401-2004	2
43	Rubber Mounts	3406-0143	4
44	1/2 - 13 x 3 1/2 HHCS	847-3520	4
45	1/2 - 13 x 6 HHCS	847-3424	1
46	1/2 - 20 Hx LK. Nut	919-3500	4
47	7/16 Plain Washer	80-0239	1
48	3/8 Spacer	1926-4001	1



# Front End and Steering Group



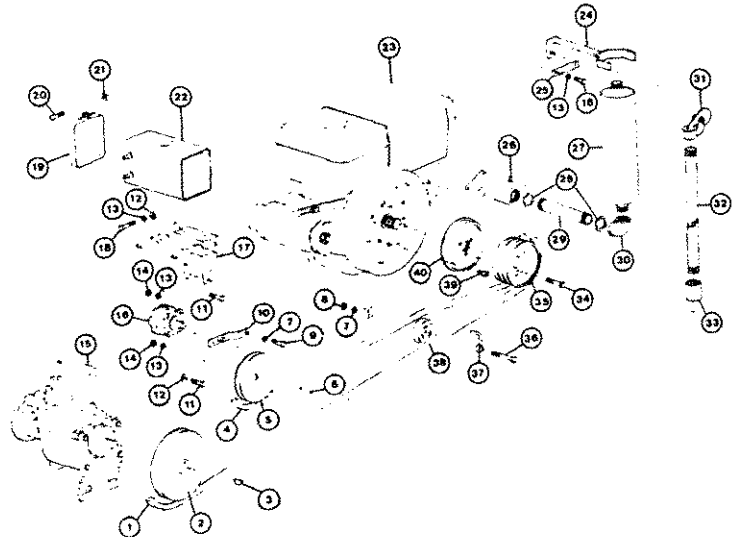
Item	Description	Part No.	Qty
1	Front Axle Weldment	3303-7001	1
2	Bearing	40-1139	4
3	Spindle Weldment	3303-7002	2
4	Bearing Seal	85-4822	4
5	Tapered Roller Bearing W/Race	40-4643	4
6	Wheel Hub Assembly*	41-8005	2
7	Cotter Pin 1/8 x 2"	52-0216	2
8	1" - 14 Slotted Hx. Nut	920-4800	2
9	Hub Cap	41-0102	2
10	Wheel Rim 12"	41-4412	2
11	1/2 - 20 Lug Nut	914-3500	8
12	4" x 12" Inner Tube	41-1412	2
13	4" x 12" Rib Tire	41-2412	2
14	Grease Fitting	862-0501	2
15	No. 6 Tapered Pin	53-0806	2
16	5/8-18 Hx. Jam Nut	903-3900	4
17	Steering Tab Weldment L.H.S.	3303-7003	1
18	Tie Rod Assembly	3403-8002	1
19	Drag Link Assembly	3403-8002	1
20	Steering Tab Weldment R.H.S.	3403-7001	1
21	1-3/8 I.D. x 2" O.D. Washer	80-0254	1
22	Pitman Arm Weldment	3302-7001	1
23	Steering Wheel	44-2885	1
24	Spirol Pin 1/4 x 1 1/4	53-0514	1
25	Steering Column Shaft	1902-7003	1
26	Steering Bevel Gear	352-0724	1
27	Spirol Pin 5/16 x 1-5/8	53-0613	1
28	Spacer Ring	80-1042	1
29	Cotter Pin 3/16 x 1 1/2	52-0412	1
30	Grease Fitting	862-0399	1
31	Wheel Hub Assembly	41-8005	2

\* (Incl. #4, 5, 6, 7, 8 & 9)

## Engine Group

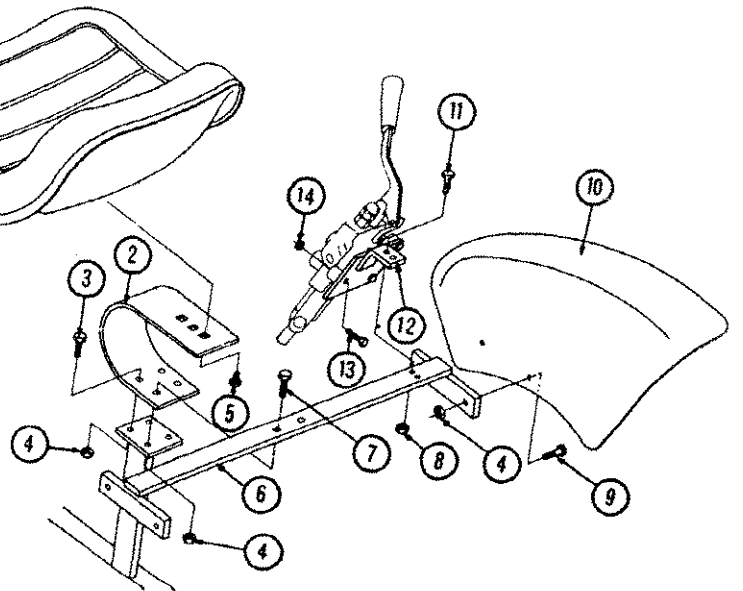
Item	Description	Part No.	Qty
1	Main Drive Belt	392-	1
2	Transmission Pulley	372-1470	1
3	#606 Woodruff Key	68-0009	1
4	Hyd. Pump Belt	391-6842	1
5	Hyd. Pump Pulley	371-0950	1
6	1/8 x 1 1/4 Square Key	68-0216	1
7	3/8 Lockwasher	80-0530	2
8	3/8 - 16 Hx. Nut	902-3000	2
9	3/8 - 16 x 1" Hx.Hd. Cp. Screw	847-3004	1
10	Pump Bracket	78-2502	1
11	5/16 - 18 x 1 1/2 Hx. Hd. Cp. Screw	847-2806	2
12	5/16 Plain Washer	80-0228	2
13	5/16 Lockwasher	80-0528	2
14	5/16 - 18 Nx. Nut	902-2800	2
15	Oil Plug Decal	42-1015	1
16	Hyd. Pump	78-8001	1
17	Hyd. Pump Base	78-7002	1
18	8 m.m. x 60 m.m. Hx. Hd. Cp. Screw	895-0860	2
19	Tank Straps	3213-3501	2
20	1/4 - 20 x 3 Pan Hd. Screw	811-2612	2
21	1/4 - 20 Sq. Hd. Nut	907-2600	2
22	Hyd. Tank	73-0492	1
23	Diesel Engine 8 HP	30-1080	1
24	Muffler Support Bracket	71-7005	1
25	Compression Release br kt.	30-2013	1
26	Exhaust Manifold	71-7004	1
27	Muffler	71-1566	1
28	Locking Ring	930-7500	2
29	Exhaust Pipe	869-1636	1
30	90° Elbow	868-4575	1

31	Weather Cap	71-7941	1
32	Straight Pipe	869-1696	1
33	Coupling	869-1608	1
34	5/16 - 18 x 2 Hd. Cp. Screw	847-2808	3
35	Engine Pulley	372-1609	1
36	3/8 - 16 x 2 1/2 Hx. Hd. Cp. Screw	847-3010	1
37	Belt Retainer	437-7010	1
38	Flat Idler Pulley	380-1032	1
39	12 m.m. x 35 m.m. Screw	875-3438	4
40	Adaptor Plate	30-3001	1

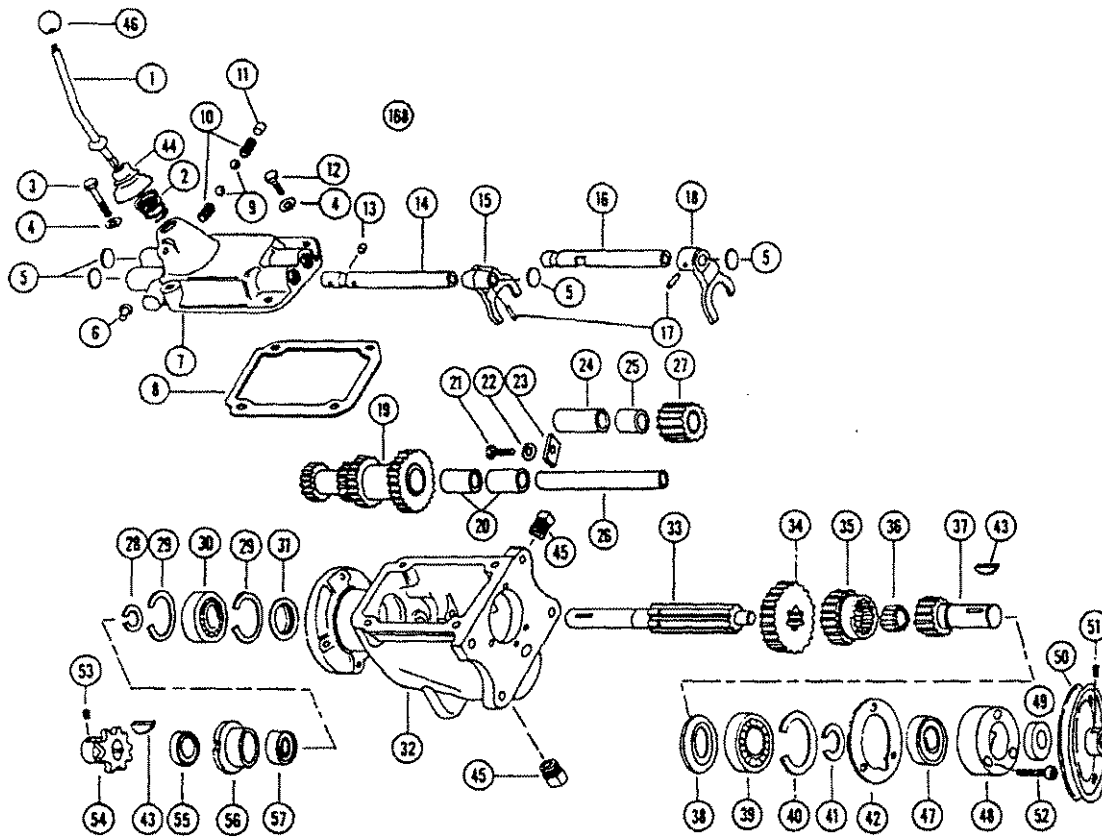


## Seat and Fender Group

Item	Description	Part No.	Qty
1	High Back Seat Deluxe	43-9001	1
2	Seat Spring	340-3152	1
3	3/8-16 x 1 1/4 Hx. Hd. Cp. Screw	847-3004	2
4	3/8-16 Hx. Nut	902-3000	8
5	1/2-13 x 1 1/4 Hx. Hd. Cp. Screw	847-3405	1
6	Fender Support Bracket Weldment	3339-7003	1
7	3/8-16 x 1 1/4 Hx. Hd. Cp. Screw	847-3007	2
8	1/4-20 Hx. Nut	902-2600	2
9	5/16-18 x 1 1/4 Carriage Bolt	843-0510	4
10	R.H. Fender	2419-3502	1
	L.H. Fender (Not Shown)	2419-3501	1
11	1/4-20 x 1 1/2 Hx. Hd. Cp. Screw	847-2606	2
12	Control Valve Support Weldment	78-7001	1
13	1/4-20 x 1 1/4 Hx. Hd. Cp. Screw	847-2607	2
14	1/4-20 Hx. Nut	902-2600	2



# 3 Speed Transmission Service Parts Breakdown



Item Code No.	Description	Item Code No.	Description
*N.I. 1AT92-148A	Complete control assembly with AC92-2	26.	2407-9241 Countershaft
*N.I. 2407-8002	Complete control assembly with AC92-2B	27.	2407-9214 Reverse idler gear and bushing assembly
1.	2407-1501 Control lever assembly	28.	2407-9238 Snap ring
AC92-2A	Control lever assembly	29.	2407-9235 Main shaft bearing snap ring
AC92-2B	Control lever assembly, straight	30.	2407-9203 Main drive gear bearing
AC92-2E	Control lever assembly	31.	2407-0137 Oil Retaining washer, rear
*N.I. C2-2- 1/2	Fulcrum ball	32.	2407-9208 Transmission case
*N.I. X19C6	3/16 x 7/16 Round Pin (Used to retain Fulcrum ball)	33.	2407-1001 Main shaft
2.	2407-9243 Control lever support spring	34.	2407-9216 Main shaft low and reverse gear
3.	847-2806 5/16-18 x 1-1/2 hex head bolt	35.	2407-9215 Main shaft second speed gear
4.	80-0528 5/16 lockwasher (need 4)	36.	2407-9202 Bearing roller (need 13)
5.	2407-9228 5/8 expansion plug (need 4)	37.	2407-1002 Main Drive gear
6.	2407-9224 Control housing pin	38.	2407-9136 Oil retaining washer, front
7.	2407-9220 Control housing	39.	2407-9204 Main drive gear bearing
8.	2407-9212 Control housing gasket	40.	2407-9236 Main drive gear bearing snap ring
9.	2407-9201 5/16 Steel ball (need 2)	41.	2407-9237 Main drive gear bearing snap ring
10.	2407-9224 Poppet spring (need 2)	42.	2407-9211 Main drive gear bearing retainer gasket
11.	2407-9227 Poppet spring seat	43.	68-0009 Woodruff key 606 (need 2)
12.	847-2803 5/16-18 x 3/4 hex head bolts (need 6)	44.	44-5940 Rubber boot
13.	2407-9229 Interlock Plunger	45.	866-7102 1/2 Pipe plug (need 2)
14.	2407-9223 Shift rail, low and reverse	*N.I. NA	Speedometer gear spacer (for early models)
15.	2407-9210 Shift fork, low and reverse	46.	44-0095 Shifter knob
16.	2407-9231 Shift rail, high and intermediate	47.	40-1640 Bearing
17.	2407-9225 Shift fork pin (need 2)	48.	2407-4001 Bearing retainer
18.	2407-9209 Shift fork, high and intermediate	49.	85-8796 Oil seal
19.	2407-9213 Countershaft gears and bushing assembly	50.	372-1470 7" pulley "B" section 7/8 Bore
20.	Not Serviced Countershaft gear bushings (need 2)	51.	876-2805 5/16-18 x 5/16 soc. set screw
21.	847-2602 1/4-20 x 1/2 hex head bolt	52.	875-2805 5/16 x 1 1/4 soc. hd. cp. screw (need 3)
22.	80-0526 1/4 lockwasher	53.	876-2601 1/4-20 x 1/4 soc. set screw
23.	2407-9226 Idler and countershaft lock plate	54.	365-4011 11 tooth sprocket 3/4 bore
24.	2407-9239 Reverse Idler shaft	55.	85-7628 Oil seal
25.	2407-9240 Reverse Idler gear bushing	56.	2407-4002 Bearing retainer
		57.	40-3124 Bearing

\*N.I. Not Illustrated.