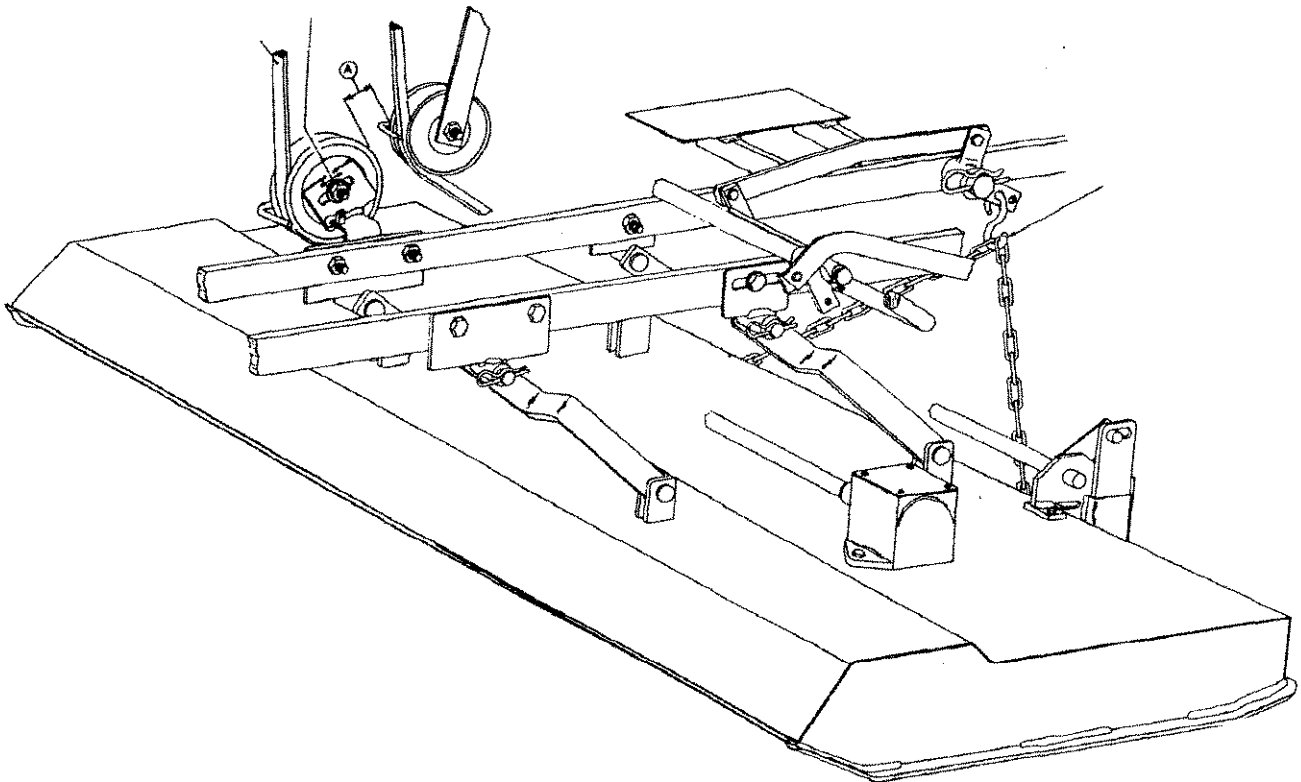


# *Speedex*

## **Parts Manual for All Rotary Mowers**



**Speedex Tractor Company**

# 36" AND 48" MOWER INSTALLATION-TYPICAL-MODELS 10, 12 AND 1640

NOTE: WITH MOWER CLUTCH ENGAGE, ADJUST 'V' IDLER (SLIDE FRONT TO BACK) TO OBTAIN A MIN. OF  $\frac{3}{8}$ " TO 1" MAX.

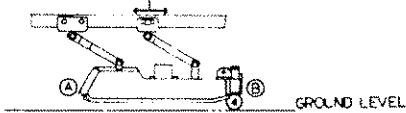
NOTE: WHEN MOWER IS IN LOWEST POSITION ADJUST CHAINS FROM MOWER DECK TO LIFTING ARM WITH SOME SLACK

(B)  
BELT CHART

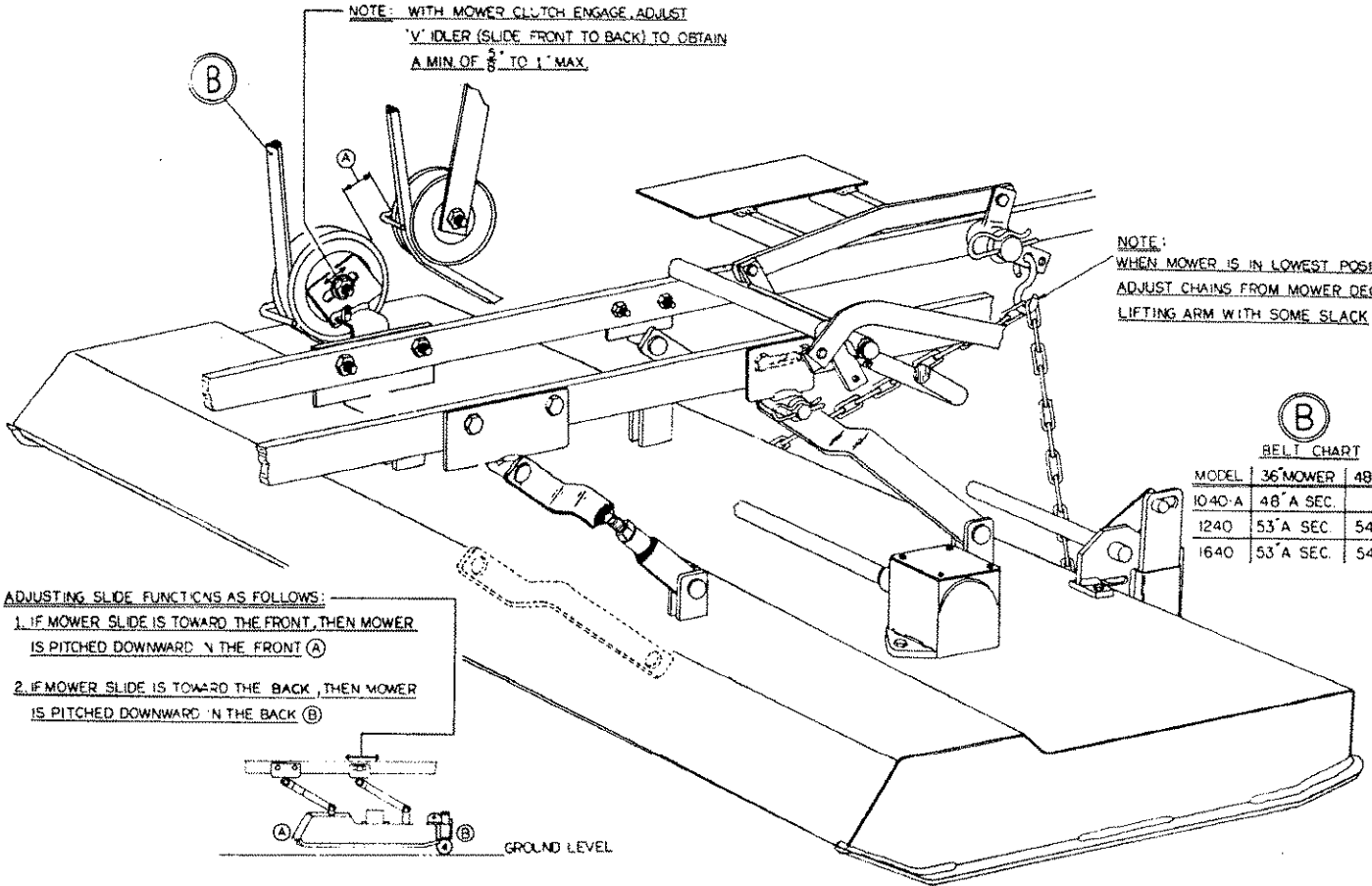
MODEL	36" MOWER	48" MOWER
1040-A	48" A SEC.	N.A.
1240	53" A SEC.	54" B SEC.
1640	53" A SEC.	54" B SEC.

ADJUSTING SLIDE FUNCTIONS AS FOLLOWS:

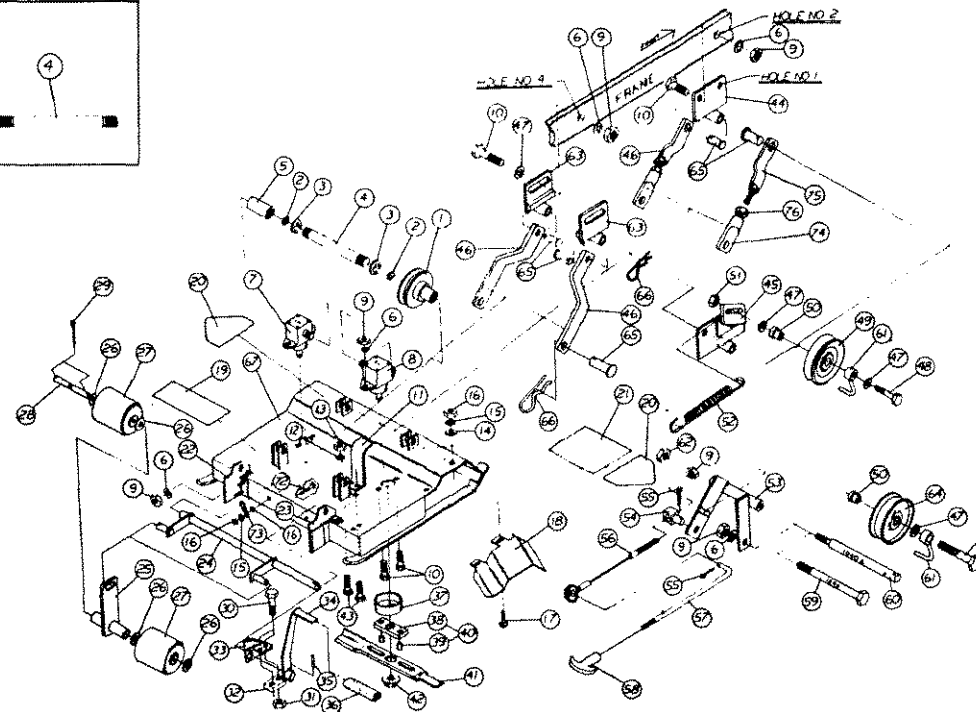
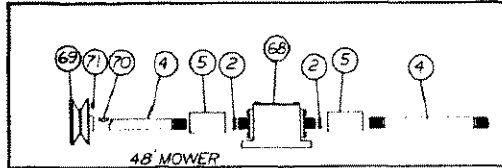
1. IF MOWER SLIDE IS TOWARD THE FRONT, THEN MOWER IS PITCHED DOWNWARD IN THE FRONT (A)
2. IF MOWER SLIDE IS TOWARD THE BACK, THEN MOWER IS PITCHED DOWNWARD IN THE BACK (B)



SUGGESTED PITCH OF MOWER SHOULD BE  $\frac{1}{2}$ " IN. LOWER AT (A) THAN (B)

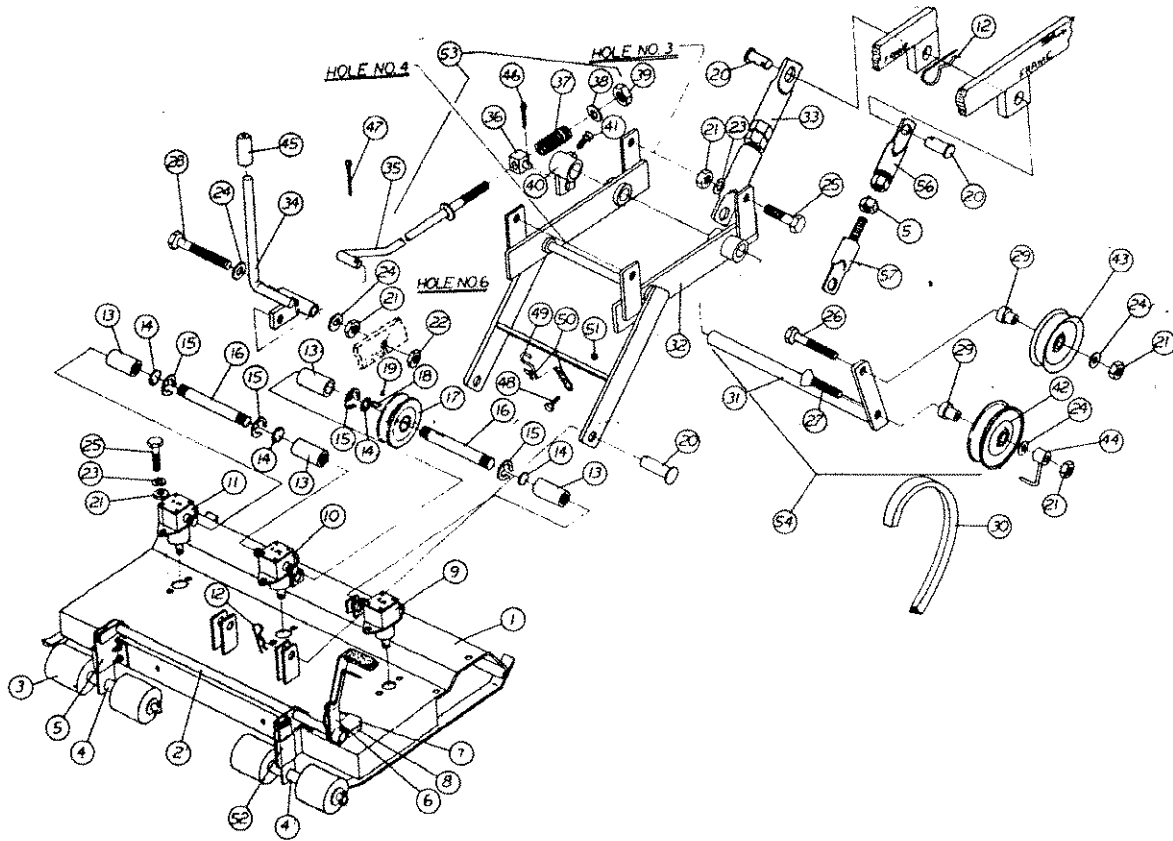


## 36" AND 48" MOWER BREAKDOWN FOR 10, 12, & 1640 MODELS



Item	Description	36" Mower	48" Mower	25.	Roller Shaft Mounting Weld	438-7007	438-7007	51.	3/8"x16 Locknut	919-3000	919-3000
1.	Drive Pulley Weldment	437-7001	—	26.	1/2" Flat Washer	80-0234	80-0234	52.	Mower Clutch Spring	344-1040	344-1040
2.	Felt Disc	437-1135	437-1135	27.	Roller	46-0109	46-0109	53.	Mower Clutch Bracket	438-7014	438-7014
3.	Snap Ring	58-0088	58-0088	28.	Roller Shaft	438-1001	448-1003	54.	Trunnion (Small)	444-2020	444-2020
4.	Drive Shaft	437-1965	448-1016	29.	Cotter Pin 1/8"x3/4"	52-0206	52-0206	55.	3/32"x3/4" Cotter Pin	52-0106	52-0106
5.	44" Mower Drive Shaft P.N. 445-1002 Splined Coupling	437-3033	437-3033	30.	5/16"x18x1-1/2" HHCS	847-2806	847-2806	56.	Mower Clutch Cable	438-2101	438-2101
6.	3/8" Lockwasher	80-0530	80-0530	31.	5/16"-18 Lock Nut	919-2800	919-2800	57.	Mower Clutch Rod	438-1501	438-1501
7.	L.H. R.A. Gear Box	437-1229	437-1229	32.	Riser Block	438-2025	438-2025	58.	Clutch Handle "T" Grip	44-0293	44-0293
8.	R.H. R.A. Gear Box	437-1228	437-1228	33.	Sector Weldment	437-7018	437-7018	59.	3/8"x16x4" HHCS	847-3016	847-3016
9.	5/16"-18 Hex Nut	902-2800	902-2800	34.	Height Adjust Handle Assy	437-8015	437-8015	60.	Mower Clutch Pivot Shaft	438-1002	438-1002
10.	3/8"-16 x 1-1/4 HHCS	847-3005	847-3005	35.	1/4"x1-3/4" Spiral Pin	53-0514	53-0514	61.	Belt Retainer	437-7010	437-7010
11.	Belt Retainer	437-2504	437-2504	36.	Handle Grip	44-1556	44-1556	62.	3/8"-16 Hex Nut	902-3000	902-3000
12.	#10 Lockwasher	80-0520	80-0520	37.	Shield Cup	437-1491	437-1491	63.	Rear Mower Hanger Weld	438-7008	438-7008
13.	#10-32 Hex Nut	902-2200	902-2200	38.	Shear Block	445-0702	445-0702	64.	Flat Idler Pulley	380-1032	380-1032
14.	5/16" Flat Washer	80-0228	80-0228	39.	Shear Pins	445-0704	445-0704	65.	1/2"x1-1/2" Clevis Pin	51-0812	51-0812
15.	5/16" Lock Washer	80-0528	80-0528	40.	Shear Block Assy	445-8002	445-8002	66.	#11 Hair Pin	54-0011	54-0011
16.	5/16"-18 Hex Nut	902-2800	902-2800	41.	Mower Blade	437-1180	448-1160	67.	Deck Weldment 44" Deck Weldment, P.N. 445-7506	438-7503	448-7503
17.	5/16"-18x1 Carriage Bolt	843-0508	843-0508		44" Mower Blades (22") P.N. 445-1220			68.	Center Drive "T" Box	—	437-1230
18.	36" Mower Chute	437-7502	437-7502	42.	5/8"-18 Flange Locknut	935-3900	935-3900	69.	Drive Pulley 4-1/2"x7/8" 44" Mower Drive Pulley, P.N. 372-1445	—	372-1445
19.	Small Eagle Decal	42-1110	42-1110	43.	#10-32x3/4" Slotted Machine Screw	811-2234	811-2234	70.	#9 Woodruff Key	—	68-0009
20.	Danger "Keep Hands & Feet Away" Decal	42-4444	42-4444	44.	L.H. Front Mower Mount Plate	438-7010	438-7010	71.	5/16"-18 Set Screw	876-2801	876-2801
21.	Warning & Rules Decal	42-1112	42-1112	45.	R.H. Front Mower Mount Plate	438-7011	438-7011	72.	5/16"x18x1" HHCS	847-2804	847-2804
22.	L.H. Roller Mount Bracket	438-3501	438-3501	46.	Front Adjustable Mower Links	438-8005	438-8005	73.	Chain - 12 Links	56-0100	56-0100
23.	R.H. Roller Mount Bracket	438-3502	438-3502	47.	3/8" Flat Washer	80-0230	80-0230	74.	Mwr. Link-Tube Member	438-7006	438-7006
24.	Roller Rack & H/A Bracket	438-7006	448-7008	48.	3/8"-16x2" HHCS	847-3008	847-3008	75.	Mwr. Link - Stud Member	438-7504	438-7504
	44" Mower Roller Rack & H/A Bracket, P.N. 445-7011			49.	"V" Idler Pulley	382-1036	382-1036	76.	1/2" x 13 Hex Nut	902-3400	902-3400
				50.	Pulley Bushing	444-4008	444-4008				

# 44" AND 48" MOWER BREAKDOWN FOR 1630 31 & 32 MODELS

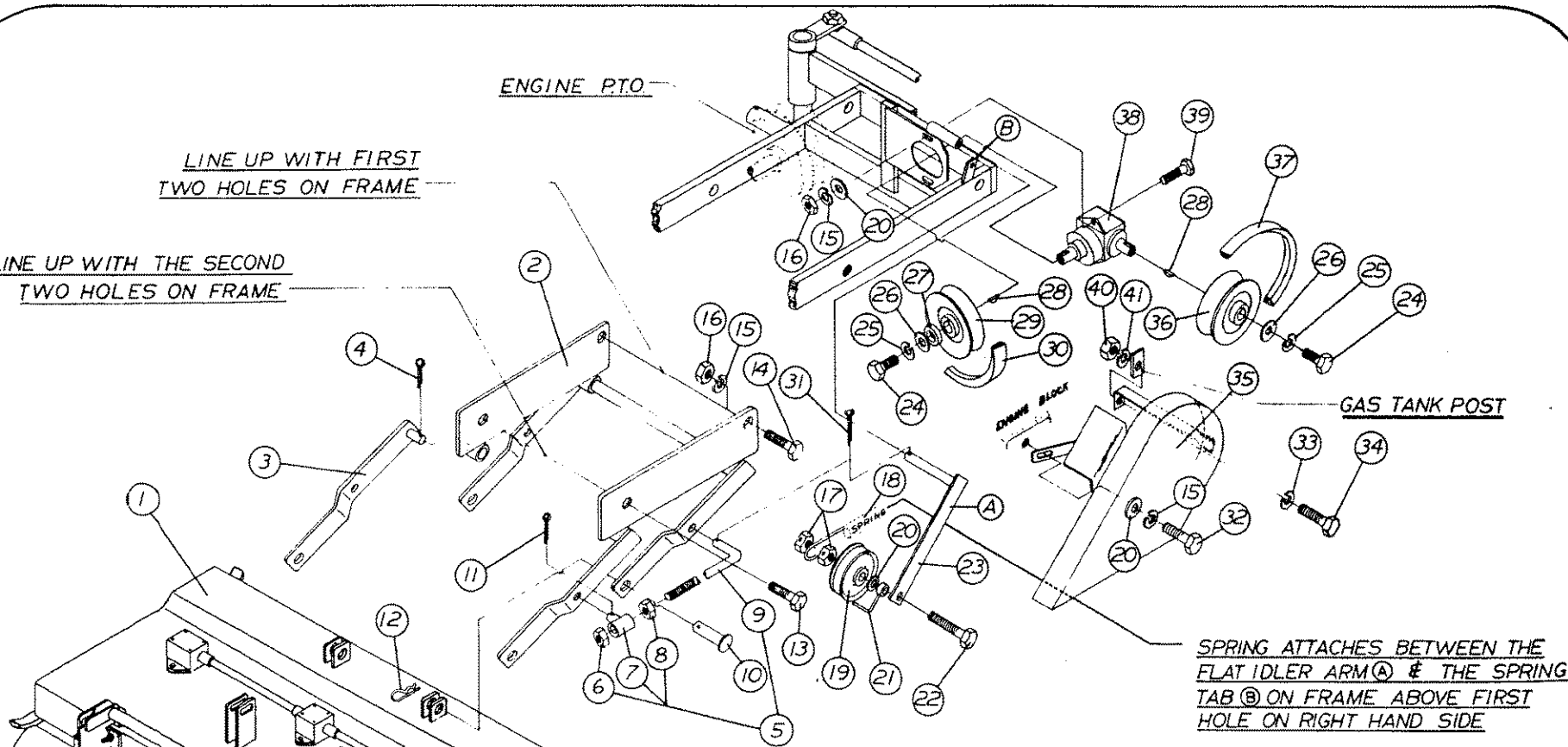


Item No.	Description	Part No.	Qty.	Item No.	Description	Part No.	Qty.
1	Mower Deck (shell)	448-0011	1	31	"V" Flat Idler Pivot Arm	448-7009	1
2	Cross Shaft Weld - Height Adjust	448-7008	1	32	Mower Hitch Weldm't	448-7004	1
3	Rollers	46-0109	4	33	Mower Lift Leg	448-7010	2
4	Slide Plates	438-7007	2	34	Clutch Handle Weldm't	437-7015	1
5	Mower Slide-R.H. Mounting Brackets	438-7501	1	35	Torsion Rod Weldm't	445-7002	1
6	Height Adjust Handle Assy	437-8015	1	36	Eye Bolt	49-3008	1
7	Spector Weld.	437-7018	1	37	Spring	342-1224	1
8	Spacer Block	438-2025	1	38	5/16" Flat Washer	80-0228	1
9	R.H. Gear Box (RH)	437-1228	1	39	3/8"-16 Lock Nut	919-3000	1
10	R.H. Gear Box (center)	437-1230	1	40	Torsion Rod Knuckle	432-7017	1
11	R.H. Gear Box (L.H.)	437-1229	1	41	Set Screw 5/16"-18x3/4"	849-3003	1
12	Hair Pin #11	54-0011	6	42	"V" Idler	382-1036	1
13	Spined Coupling	437-3033	4	43	Flat Idler	380-1032	1
14	Felt Disc.	437-1135	4	44	Belt Retainer	437-7010	1
15	Snap ring "E"	58-0088	4	45	Rubber Boot	44-0406	1
16	Drive Shaft	448-1010	2	46	Cotter Pin	52-0108	1
17	Pulley 4-1/2"x7/8"	372-1445	1	47	Cotter Pin	52-0108	1
18	Key #9	68-0009	1	48	1/4"x20x1" HHCS	847-2604	1
19	Set Screw 5/16"-18	876-2801	1	49	"S" Hook	56-0175	1
20	1/2"x1-1/2" Clevis Pin	51-0812	4	50	Chain - 14 Links	56-0010	1
21	3/8"x16 Hex Nut	902-2600	13	51	1/4"-20 Nut	902-2600	1
22	3/8"x16 Lock Nut	919-3000	1	52	L.H. Roller Mount Bracket	437-7502	1
23	3/8" Lock Washer	80-0530	10	53	Torsion Rod Assy	445-8003	1
24	3/8" Flat Washer	80-0230	4	54	"V" & Flat Idler Assy	448-8004	1
25	3/8"x16x1-3/4" HHCS	847-2807	10	55		902-3406	2
26	3/8"x16x2-3/4" HHCS	847-2811	1	56	Adjusting Leg Nut Member	448-7011	2
27	3/8"x16x2-1/4" HHCS	847-2809	1	57	Adjusting Leg & Stud Member	448-7010	2
28	3/8"x16x3-1/2"	847-2814	1	58	Nut 1/2"		2
29	Pulley Bushing	444-4008	2				
30	Belt-56"	392-6956	1				

ENGINE PTO

LINE UP WITH FIRST  
TWO HOLES ON FRAME

LINE UP WITH THE SECOND  
TWO HOLES ON FRAME



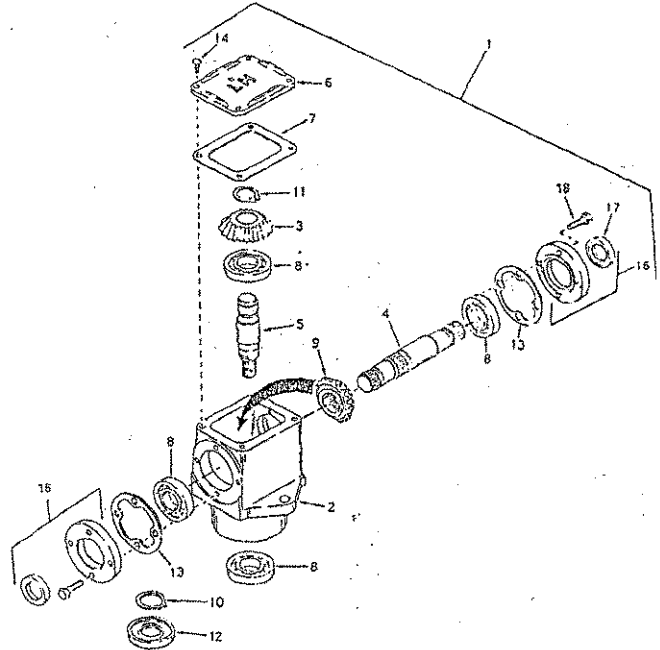
**1622 MOWER ATTACHMENT**

Item No.	Description	Part No.		
1	48" Hyd. Mower Assy without Lift	0449-0001	21.	Belt Retainer
2	48" Hyd Mower Lift Weldment	0449-7006	22.	3/8"-16x2-1/2" Hex HD Cap Screen
3	Hyd. Mower Rear Lift Leg Weldment	0449-7004	23.	Flat Idler Pivot Arm
4	1/8"x3/4" Cotter Pin	0052-0206	24.	5/16"-18x3/4" Hex HD Cap Screen
5	Hyd. Mower Lift Leveling Rod Assy	0449-8006	25.	5/16" Lock Washer
6	7/16"-20 Hex Nut	0902-3300	26.	Flat Washer
7	Adjusting Knuckle Weldment	1710-7006	27.	Mower PTO Clutch Spacer
8	7/16"-20 Hex Nut	0902-3300	28.	#6 Woodruff Key
9	Leveling Rod 1/48" Hyd Mower Lift	0051-0812	29.	5" OD x 3/4" Bore Pulley (B Section)
10	1/2"x1-1/2" Clevis Pin	0051-0812	30.	27" Kevlar Cord Belt (B Section)
11	1/8"x3/4" Cotter Pin	0052-0206	31.	1/8"x3/4" Cotter Pin
12	1/2" Rue Ring Cotter #24	0054-0024	32.	7/16"-14x3/4" Hex HD Cap Screen
13.	7/16"-14x3/4" Hex HD Cap Screw	0847-3203	33.	5/16" Lock Washer
14.	3/8"-16x1-3/4" Hex HD Cap Screw	0847-3007	34.	5/16"-18x1" Hex HD Cap Screw
15.	3/8" Lock Washer	0080-0530	35.	Mower Drive Belt Cover For 1622
16	3/8"-16 Hex Locknut	0902-3000	36.	5" OD x 3/4" Bore Pulley (B Section)
17.	3/8"-16 Hex Locknut	0919-3000	37.	56" Kevlar Cord Belt (B Section)
18.	Spring-5" LGx40 Coils	0344-1040	38.	L. H. Hyd. Right Angle Gear Box
19.	Flat Idler Pulley (3-1/4" OD x 5/8" 10)	380-1032	39.	3/8"-16x1-3/4" Hex HD Cap Screw
20.	3/8" Flat Washer	0080-0230	40.	5/16"-18 Hex Nut
			41.	5/16" Lock Washer
				0437-7010
				0847-3010
				0449-7007
				0847-2803
				0080-0258
				5/16"
				0449-4005
				0372-1251
				0392-6927
				0052-0206
				0847-3203
				0080-0528
				0847-2794
				3539-7506
				0372-1251
				0392-6956
				0437-1231
				0847-3007
				0902-2800
				0080-0528

# SPEEDEX MOWER DECK PARTS

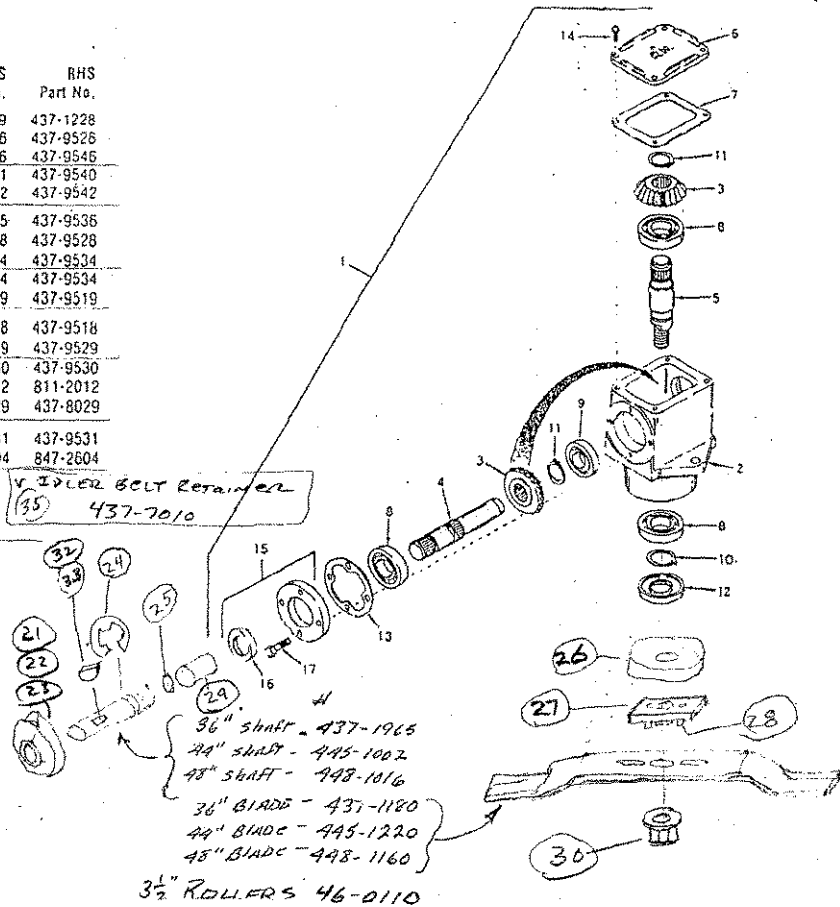
## "T" DRIVE HEAD

Item	Description	Part No.
1	Head Assy. "T" Drive (incl. Nos. 2 thru 16)	437-1230
2	Housing, "T" Drive	437-9547
3	Gear, Miter	437-9546
4	Shaft, Input	437-9572
5	Shaft, Output	437-9542
6	Cover	437-9505
7	Gasket, Cover	437-9528
8	Bearing, Ball	437-9534
9	Gear, Miter	437-9569
10	Ring, Snap	437-9519
11	Ring, Snap	437-9518
12	Seal, Oil	437-9529
13	Gasket, Cap	437-9530
14	Screw, Rd. hd. self-tap. 10-24 x 1/2	437-9525
15	Ring, Snap	437-9510
16	Cap & Seal Assy., Retainer (incl. Nos. 17 & 18)	437-9509
*Note	Seal, Oil	437-9531
18	Screw, Hex hd., 1/4-20 x 7/8	437-9530



## RIGHT ANGLE BOX BREAKDOWN

Item	Description	LHS		RHS	
		Part No.	Part No.	Part No.	Part No.
1	R A. Box	437-1229	437-1228		
2	Housing	437-9528	437-9528		
3	Miter Gear	437-9546	437-9546		
4	Input Pinion Shaft	437-9541	437-9540		
5	Output Pinion Shaft	437-9542	437-9542		
6	Housing Cover	437-9535	437-9536		
7	Cover Gasket	437-9528	437-9528		
8	Ball Bearing	437-9534	437-9534		
9	Ball Bearing	437-9524	437-9534		
10	Snap Ring	437-9519	437-9519		
11	Snap Ring	437-9518	437-9518		
12	Oil Seal	437-9529	437-9529		
13	Gasket	437-9530	437-9530		
14	#10 Screw	811-2012	811-2012		
15	Cap & Seal Assy.	437-8029	437-8029		
16	Seal	437-9531	437-9531		
17	W. Bolt	847-2604	847-2604		



- 18 FLAT IDLER 380-1032
- 19 V-IDLER 382-1036
- 20 Pulley BUSHING 444-4008
- 21 3 1/2 x 7/8 Pulley 372-1435
- 22 4 1/2 x 7/8 Pulley 372-1445
- 31 (36" 42") Pulley 437-7001
- 32 (44") Key = 9 68-0009
- 33 (48") sq key 1/2 = 1 68-0316
- 24 E-CLIPS - 58-0088
- 25 Felt Discs - 437-1135
- 26 GRASS-CAPS - 437-1491
- 27 Shear Block - 445-8002
- 28 Shear Pins 1/2 - 445-0712
- 29 Couplings - 437-3033
- 30 FLANGED LOCKNUT 435-3900

- V-IDLER BOLT Retainer 437-7010
- 36" SHAFT - 437-1965
- 24" SHAFT - 445-1002
- 48" SHAFT - 448-1016
- 36" BLADE - 437-1180
- 24" BLADE - 445-1220
- 48" BLADE - 448-1160
- 3 1/2" ROLLERS 46-0110

**SPEEDEX ORIGINAL EQUIPMENT PARTS**

**MOWER GEARBOX AND SHAFT PARTS**

SPEEDEX PART NO.	DESCRIPTION	SPEEDEX LIST PRICE
437-1228	RH GEARBOX - NEW	259.50
437-1228R	RH GEARBOX - REBUILT W/CORE	139.00
437-1229	LH GEARBOX - NEW	247.73
437-1229R	LH GEARBOX - REBUILT W/CORE	132.00
437-1230	T GEARBOX - NEW	N/A
437-1230R	T GEARBOX - REBUILT W/CORE	179.00
Rebuilt Gearboxes sold on exchange only. The gearbox that you receive is rebuilt with all new gears,shafts, bearings and seals.		
When sending us your old gearbox to exchangefor a rebuilt one make sure it is reuseable. We cannot accept cores with stripped threads, cracks in the housing or broken mounting tabs. When we receive your rebuidable gearbox we will ship the rebuilt one.		
437-9526	RH/LH HOUSING	116.45
437-9547	T HOUSING	124.82
437-9546	MITER GEAR SIDE RH/LH/BTM	39.54
437-9569	MITER GEAR T SIDE	36.59
437-9540	INPUT PINION SHAFT RH	46.32
437-9541	INPUT PINION SHAFT LH	52.05
437-9572	INPUT PINION SHAFT T	72.99
437-9542	OUTPUT SHAFT	52.38
437-1491	SHIELD CUP	9.26
437-3033	SPLINED COUPLING	17.94
437-1965	36" CROSS SHAFT	74.61
445-1002	44" CROSS SHAFT	85.73
445-1016	48" CROSS SHAFT	94.96
437-9535	HOUSING COVER LH & T	14.29
437-9536	HOUSING COVER RH	15.49
437-9528	COVER GASKET	4.98
437-9530	SIDE CAP GASKET	4.98
437-9531	OIL SEAL SIDE	9.26
437-9529	OIL SEAL BOTTOM	10.70
437-8029	CAP SEAL ASS'Y	33.50
437-9534	BALL BEARING	24.69
437-9524	BALL BEARING	37.95
437-9518	SNAP RING TOP	1.17
437-9519	SNAP RING BOTTOM	1.17
437-9510	SNAP RING HD - USE WITH SHAVED GEARS	5.95
58-0088	E-CLIP	0.99